



Year 5 Newsletter

Spring 2—2025/2026



Reading

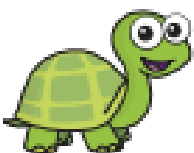
So far in 'Journey to the River Sea', Maia was sent to live with distant relatives in the Amazon. She hoped for adventure but found her cousins, aunt and uncle to be cold and selfish. She befriended Finn, a mysterious boy who lived on the river, and grew to love the beauty and freedom of the rainforest, realizing she felt more at home there than with her family. Since then, however, her new friends have left and she now feels more alone than ever.

Writing

This half term, the children are learning a text called 'Tidy Your Bedroom Machine'. They will continue to build on skills taught previously but with a greater focus on non-fiction tools and techniques, including: time adverbials to sequence events, modal verbs to suggest possibility and rhetorical questions to draw the reader in. The children will end the unit by creating an explanation text about a fictional creature.

Maths

In maths this half term, the children will be building on their knowledge of decimals and fractions, looking to find equivalences before linking this knowledge to percentages. Once complete, the children will consolidate and add to their knowledge of area and perimeter, including finding the area of compound shapes.



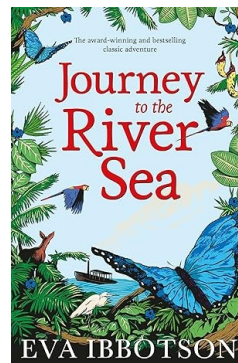
Key Dates

23rd February—The Living Rainforest trip

18th March—Church trip

Whole Class

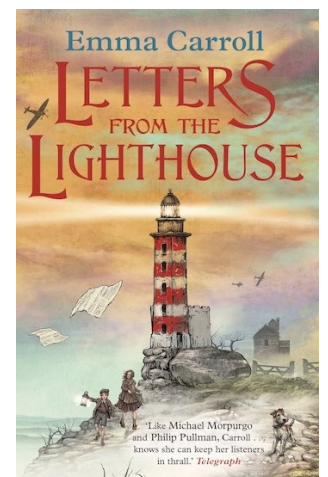
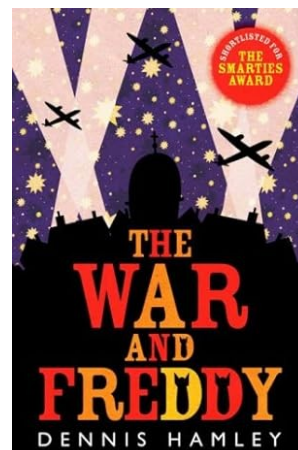
Reading



Class Read



Suggested Books for Reading



Science

In science this half term, the main enquiry question is 'How does the temperature of water affect the speed of sugar dissolving?'. In this unit, they will be identifying and classifying living materials based on their solubility. They will use knowledge of solids, liquids and gases to decide how mixtures might be separated, including through filtering, sieving and evaporating

History

In history, the children will be conducting a local history study of South Hill Park. The big question will be 'How has South Hill Park changed?', looking at the changes made and uses of the historic building from the 1600s until the twentieth century, including its uses throughout World War One and World War Two and its links to the BBC (British Broadcasting Corporation).

DT

In DT this half term, the children will be looking at structures used to create bridges. After learning about different structures used, they will work in small teams, using a wide range of tools and equipment, to create a model bridge. Once created, they will evaluate their ideas and products against their own design criteria and consider the views of others to improve their work.

PE



In indoor PE this half term, the children will be focusing on static seated balances and floor-work. In this unit, the children will develop and apply their skills to modified/non-traditional games and sports and healthy competition. In outdoor PE, the children will be doing multiskills which focuses on developing core physical competencies—agility, balance, coordination, speed, and strength.

RE



In RE this half term, the children's enquiry question is: How significant is it for Christians to believe that God intended Jesus to die? In this enquiry, children look at the events of Holy Week (the week leading up to the death and resurrection of Jesus) to investigate the cause and effects of these events. Key terms: pilate, incarnation, disciples, resurrection, crucifixion, pharisee.

Computing

This half term, the children will be learning about networks in computing. The end goal of this unit is to collaborate and create a newsletter. They will learn what a computer system is and how they work; why internet addresses are important; what data packets are and how they help us send messages; the benefits of collaboration over the internet and how to communicate responsibly.

French

In French this half term, the topic is Chez moi (My Home). By the end of this unit, pupils will have the knowledge and skills to present both orally and in written form about where they live and which rooms they have/do not have in their homes in French. The unit focuses on using previously learnt grammar, using it with new vocabulary, conjunctions and grammar, demonstrating a growing ability to create independent responses.



PSHE

In PSHE, the topic is 'Healthy Me'. This Puzzle covers smoking, vaping and alcohol (including their effects on the body and why people use them), emergency aid including the recovery position, body image and media influence, relationships with food and healthy eating, and bringing together learning about healthy lifestyle choices. If you have worries or concerns around this topic and would like to learn more, please let us know.