

Year 6 Newsletter

Spring 2—2025/2026

Reading

This half term, the children will continue to delve into the futuristic world of *Mortal Engines* set against the backdrop of a dystopian world where traction cities hunt, capturing and eat smaller towns. The vibrant characters and ruthless actions will continue to give the children the opportunity to consider the events of the story from different perspectives and make predictions based on the character's motives. In addition to whole class Reading, the children will complete weekly comprehensions support their understanding of unseen texts and further prepare them for their SATs assessments.

Writing

This half term, Year 6 will focus on non-fiction as we] explore the shifting tones of customer complaints and response letters with a focus on discussion and persuasion. The children's writing will be inspired by their visit to the Natural History Museum as they take on the role of a complaining visitor and contrast this with a response from the Museum. They will learn how to create an authentic authorial voice and manipulate their tone to match the audience and purpose of their writing.

Maths

Next term in maths, Year 6 will develop their understanding of calculating the area, perimeter and volume of shapes before they secure their skills in measuring and calculating angles and ratio. Children will continue to secure their arithmetic skills through weekly practice along side weekly SATs practice questions to develop their confidence applying their reasoning and problems solving skills to a range of Maths concepts.

Key Dates

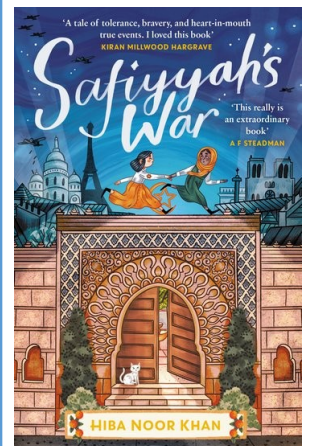
Natural History Museum visit:
Tuesday 24th February 2026

SATs week beginning:
Monday 11th May 2026

Whole Class Reading Book

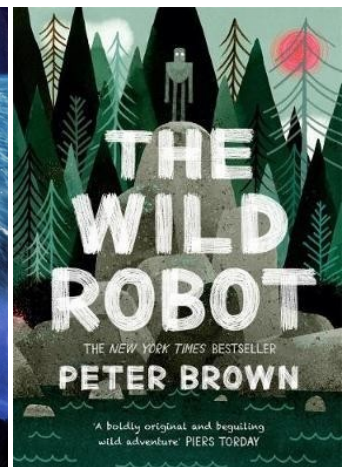
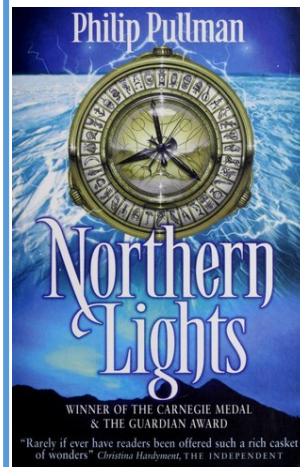


Class Read



Suggested Books for Reading

If your child has enjoyed Mortal Engines,
they may like to read...



RE

This half term, the children will be exploring the following question: is Christianity still a strong religion 2000 years after Jesus was on earth? This enquiry draws on all previous learning about the concepts of Christianity that have been studied in earlier enquiries and reflects on their meaning and impact in the world today. The children will explore the meaning and celebrations of Christian festivals before looking into how Christianity is followed around the world and the influence that it has on people's lives.



Geography



This term, the children will learn about the physical geography of Russia, including its location and key physical features such as its mountains, lakes, rivers and seas. They will learn how to plot these features on a map using a key. They will apply their knowledge of biomes to explore the landscapes across Russia. Secondly, they will explore the human geography of Russia, looking at the: population, landmarks, religion and economy. Lastly, they will explore how the Volga River has been shaped by the physical and human geography of that surrounds it.

PSHE



This half term, children will begin the PSHE unit *Healthy Me*. In this unit, the class will discuss how to make healthy choices to support their physical and mental wellbeing by developing an awareness of different types of drugs and their uses and their effects on the body particularly the liver and heart, that some people can be exploited and made to do things that are against the law and why some people join gangs and the risks this involves. At the end of the unit, we will explore attitudes towards mental health and illness along with recognising the causes of stress and the impact this can have on people's health.

PE



Outdoor - Athletics

Children will continue to secure their skills in accelerating quickly with speed and control in movement, throwing a javelin/vortex /shot put safely, with accuracy and power, performing a jump for distance, passing a relay baton in competitive situations and jumping over hurdles with fluency and speed, improving time to achieve a personal best.

Indoor - Balance

Children will develop fundamental movement skills and apply them to help develop the balance and stability skills required in a range of games and activities for example, the ability to maintain control of the core when knocked, bumped or competing for the ball. Additionally, they will develop the shoulder strength and core to send and receive effectively in games and activities including basketball, netball, handball and hockey.

Computing

This half term, Year 6 will continue their unit studying *Data Handling: How Can Spreadsheets Help Us?* Building on last year's work with databases, children will explore how spreadsheets can be used to organise and analyse information. They will learn what a spreadsheet is, how to edit and format one so it is clear and fit for purpose and how formulas allow spreadsheets to make calculations automatically. Children will apply these skills to real life problem-solving by designing their own spreadsheet to help plan an event.

