

Using the inverse to check. Before you complete these questions, make sure you have completed questions 5, 7 and 8 on the activity sheet.

Tony has written the different calculations that can be made from each original calculation.

He has made some mistakes. Can you find them all?



$$32\,255 + 25\,251 = 57\,506$$

$$25\,251 + 32\,255 = 57\,506$$

$$57\,506 - 32\,255 = 25\,251$$

$$32\,255 - 57\,506 = 25\,251$$

$$74\,258 - 34\,102 = 40\,156$$

$$40\,156 + 34\,102 = 74\,258$$

$$34\,102 + 40\,156 = 74\,258$$

$$34\,102 - 74\,258 = 40\,156$$

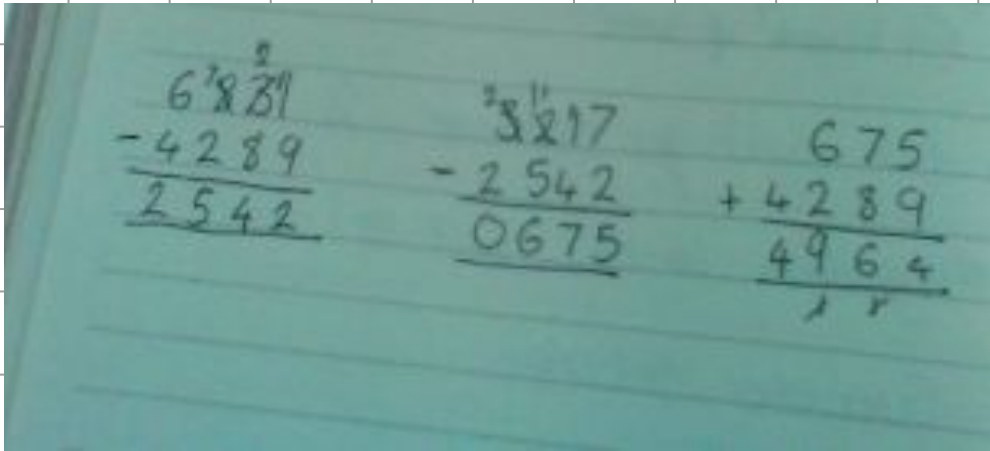
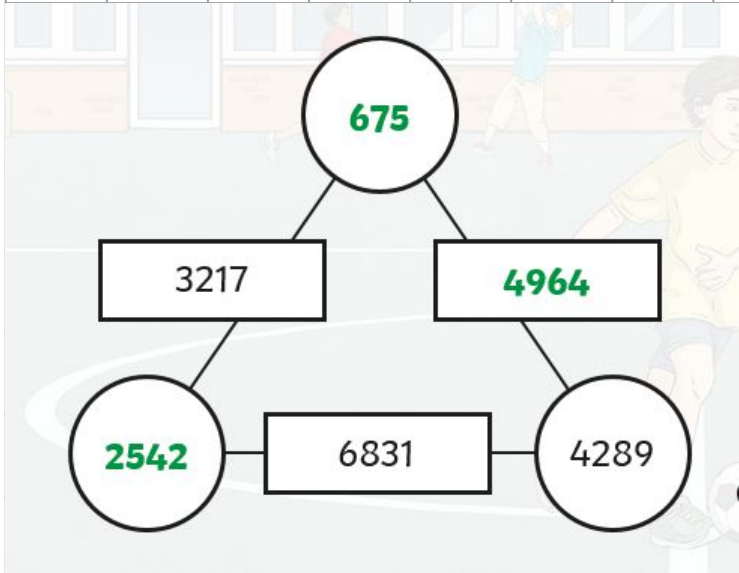
$$6721 + 25\,973 = 32\,694$$

$$25\,973 + 32\,694 = 6721$$

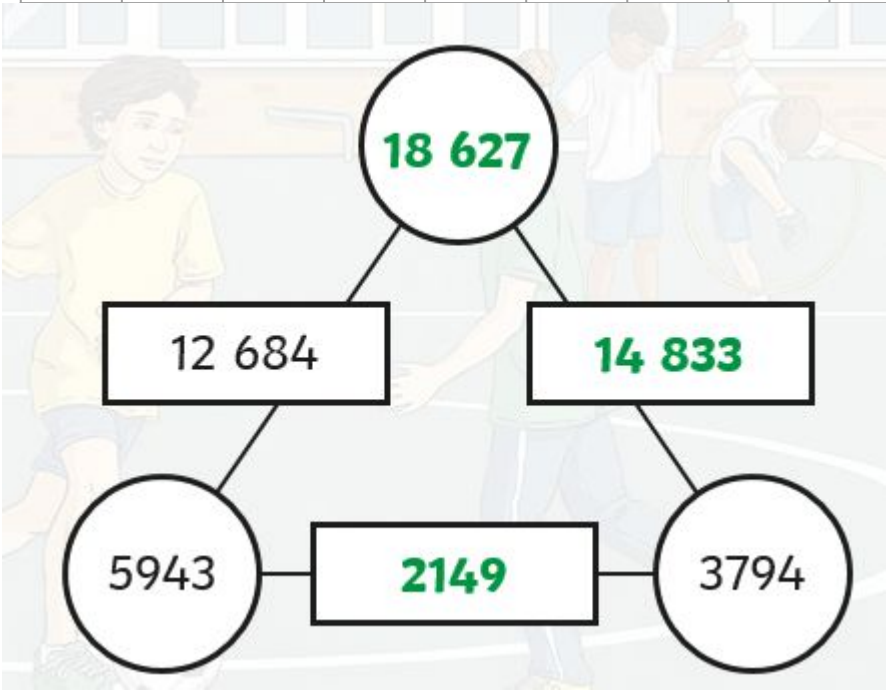
$$32\,694 - 25\,973 = 6721$$

$$32\,694 - 6721 = 25\,973$$

Using the inverse to check.



Using the inverse to check.



$$\begin{array}{r} 12684 \\ + 5943 \\ \hline 18627 \end{array}$$

$$\begin{array}{r} 18627 \\ - 3794 \\ \hline 14833 \end{array}$$

$$\begin{array}{r} 5943 \\ - 3794 \\ \hline 2149 \end{array}$$

Using the inverse to check.

