

Skellig

Summer 2 Week 2 English

This half term, you are going to be reading extracts from the book *Skellig* by David Almond and completing reading, writing and grammar activities about it.

Session 1

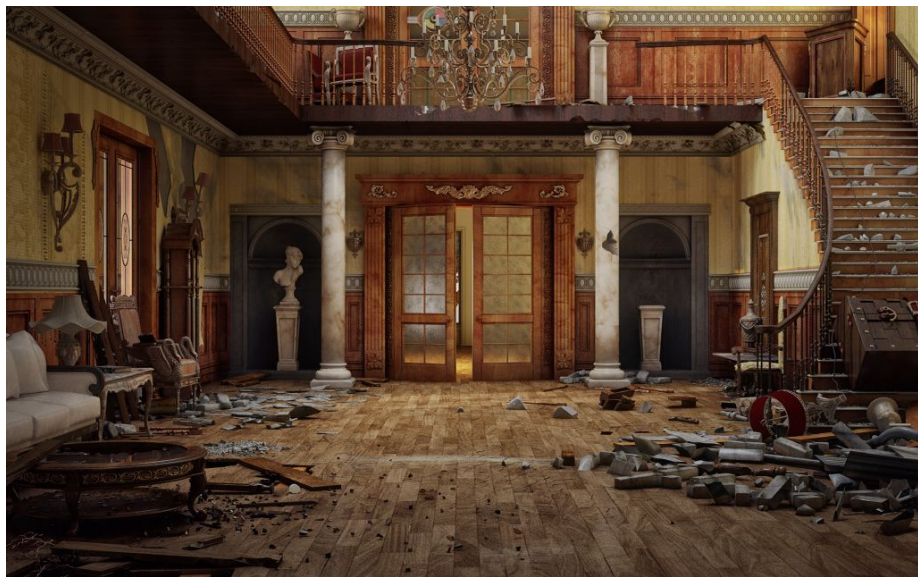
Activity 1

In Chapter 2, David Almond has used a range of sentence structure to describe the garage while continuing to build tension. He has used carefully chosen adjectives to make the garage sound unpleasant and has used all of the senses. You are going to look at some of these sentences and then write your own versions to describe one of the settings below. Try to make it sound as spooky as possible. If you need inspiration, there are some images on the next page.

Option 1 : A woods

Option 2 : The entrance hall to a run-down castle

Option 3: The loft/ attic of a house (this one can be very similar to the garage in *Skellig*)



Rewrite the sentences below so they can be used to describe the setting of your choice. Make sure you think carefully about your vocabulary choices to make it sound spooky and mysterious.

1. The timbers holding the roof were rotten and the roof was sagging in.

Example: The ceiling was made from dirty sheets of canvas and there was a hole in the roof allowing in enough light to reveal the dingy room.

Example 2: The ceiling was made from white sheets of canvas and there was bright sunlight streaming through a hole in the roof.

Notice that example 2 has used the words white and bright sunlight. These make it sound much more pleasant than the words dirty and dingy. Make sure you choose words that make your setting sound unpleasant and spooky.

Type your sentence here.

2. **There were old chests of drawers and broken wash-basins, ancient doors leaning against the walls and deck chairs with the cloth seats rotting away.**

Example: There was a rotting rocking chair and dusty table, grimy, white doors leaning against the walls and an enormous box covered with a filthy dust sheet.

Your turn.

3. **There was a little window in one of the walls but it was filthy and there were rolls of cracked lino standing in front of it.**

Example: There was a pile of books in one corner but they looked moth-eaten and some of the covers had fallen off.

Your turn

4. **The place stank of rot and dust.**

Example: The place stank of mould and dust clung to my throat.

Your turn.

5. Even the bricks were crumbling like they couldn't bear the weight anymore.

Example: The pieces furniture all looked fragile like they had given up on standing tall.

This example uses a simile to help the reader picture what the reader is imaging. The simile also personifies the bricks by implying they have feelings.

Your turn.

6. I heard something scratching in one of the corners and something scuttling about. Then it all stopped and it was just dead quiet in there.

Example: I heard a creak from something putting weight onto a floorboard and something rustling in the corner. Then it was silent.

This example has used sound. It has not given away very much detail which leaves the reader wondering what was making the sounds.

Your turn.

Now come up with three more sentences that you could use to describe your chosen setting. Remember you want it to sound unpleasant and make your reader want to find out more.

1.

2.

3.