

Claude Monet

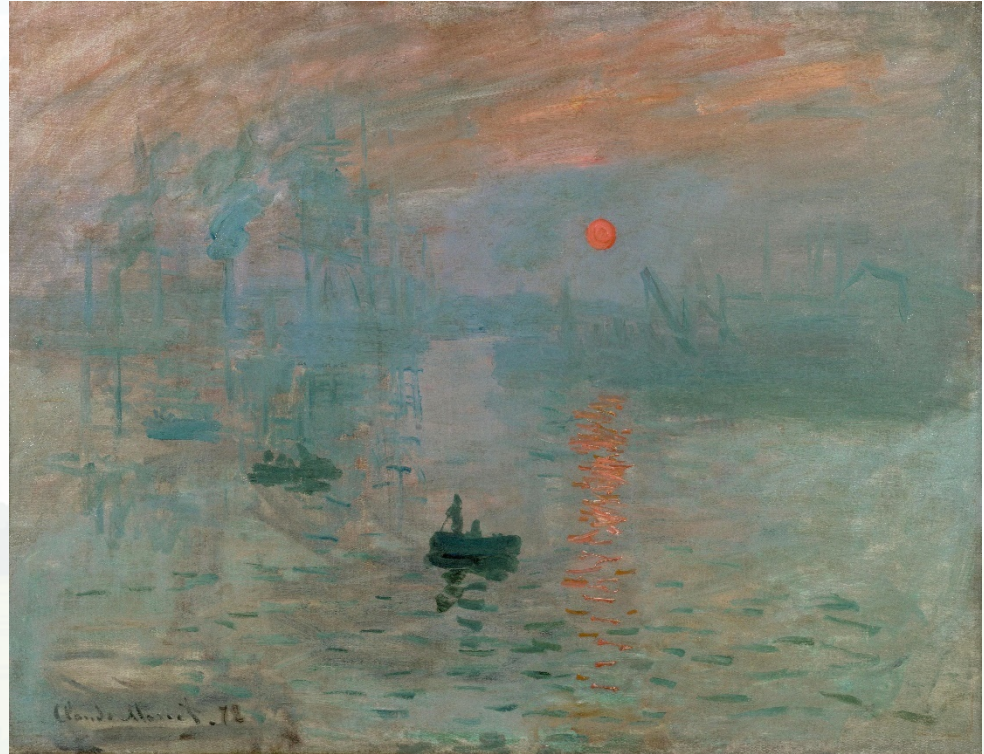
Artist 1840 - 1926

twinkl

Impressionism

Monet is known as one of the founders of the **Impressionist** movement, along with the other artists experimenting with painting styles at that time.

In fact, the name, **Impressionist**, comes from a painting Monet exhibited called Impression, Sunrise.

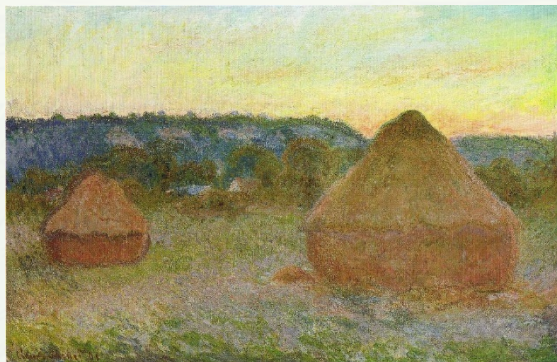
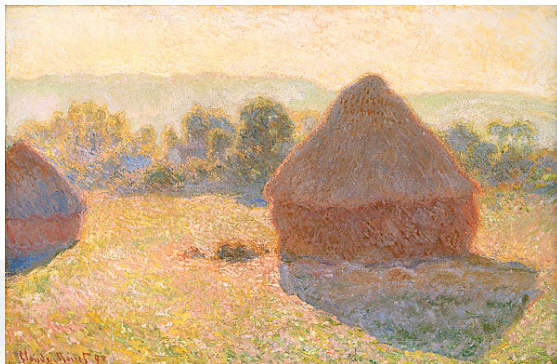


Changing Light

Monet often painted the same scene many times, to capture the changing light and seasons.

Look at the pictures of the haystack paintings.

How does the changing light affect the feel of the paintings?



The Houses of Parliament



Weeping Willow



Monet painted this in honour of all the fallen soldiers in the First World War.

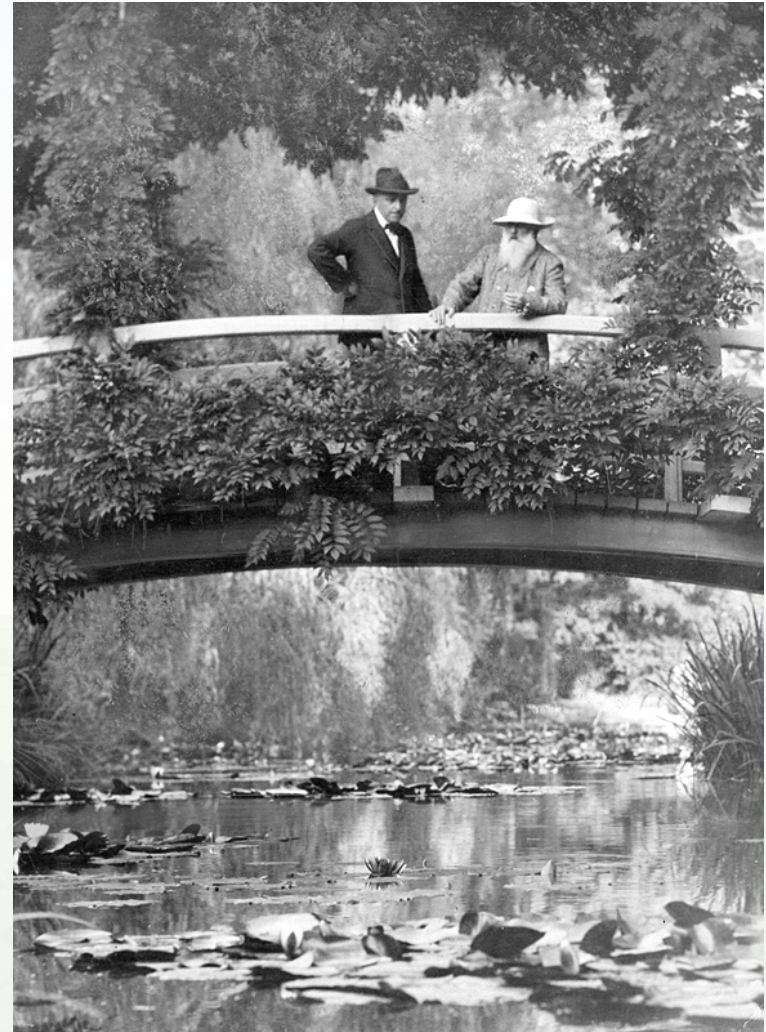
Water Lilies and Japanese Bridge



Monet moved to Giverny in France, and he spent many hours painting the water lilies and the bridge in a series of huge paintings. Paintings of the water lilies are displayed in a purpose built, curved room at Musée de l'Orangerie, Paris.

On The Bridge

Claude Monet on the bridge at Giverny, with an unnamed visitor, in 1922.



Woman With An Umbrella



"I'm working like never and at new attempts, figures in the open air as I understand them, made like landscapes. It is an old dream that still worries me and that I want to fulfil once and for all; but it is hard !"

Claude Monet

The Garden In Flower



Bridge In Argenteuil



Self Portrait With Beret



Monet painted this self portrait in 1886.

On The Bridge

Claude Monet developed problems with his sight. This affected the colours used in his paintings, and following a cataract operation in 1923, he repainted some of his works of art, to add more blue.

Monet developed lung cancer at the age of 86, and died on 5th December, 1926. He is buried in Giverny cemetery.

Monet had an enormous impact on the art world, creating many of the world's most iconic oil paintings.

